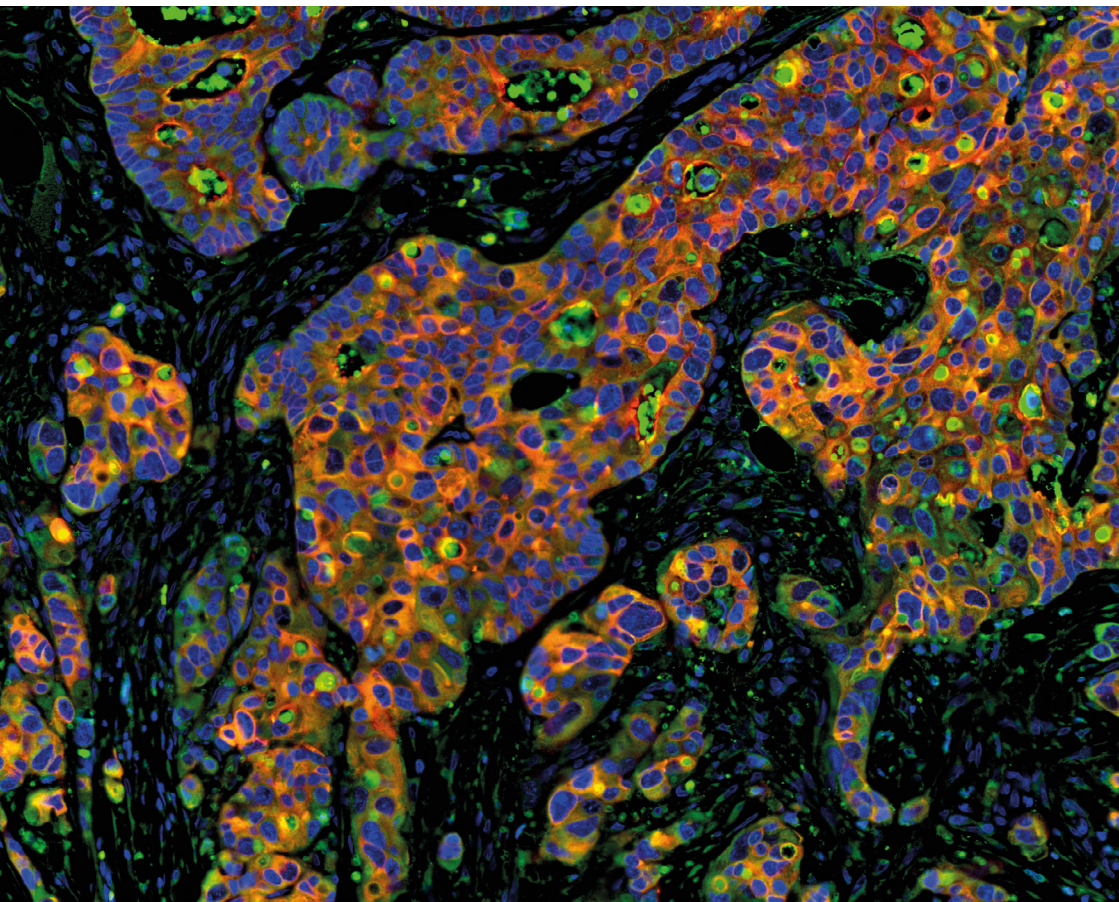


NUVISAN



DRUG DISCOVERY

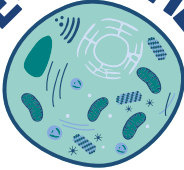
Immuno-Oncology

www.nuvisan.com



NUVISAN IMMUNO-ONCOLOGY SOLUTIONS

STATE-OF-THE-ART



in vitro Immuno-Oncology
assay panel

ADVANCED ANALYSIS TOOLS:



- Comprehensive immunophenotyping
- Cytokine analysis platform
- Spatial profiling

Diverse Models

- >100 preclinical oncology models in mice and rats
- Syngeneic and humanized models



CUTTING-EDGE TECHNOLOGY

Spectral flow cytometry
Single cell gene sequencing
CRISPR based screening

AAALAC
accredited

Certified provider of
10X GENOMICS

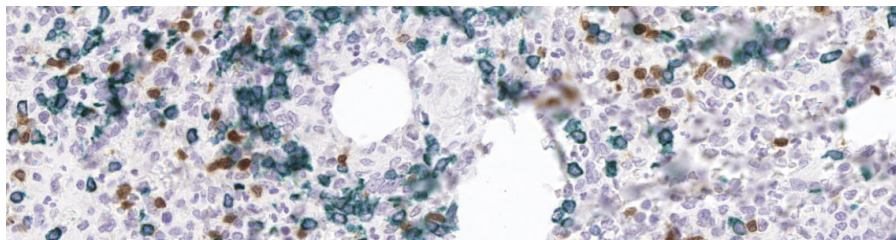


**ACCESS
TO HUMAN
BIOSAMPLES**



**>50 Scientists &
Lab Professionals**

- Long-standing industry experience
- Cross-functional integrated drug discovery



Immuno-Oncology Solutions

NUVISAN offers a broad portfolio and customized services to drive forward your immuno-oncology project. With our long-standing industry experience, we advise on and perform the most suitable studies to advance your immuno-oncology program from the exploratory to the preclinical and clinical phase.

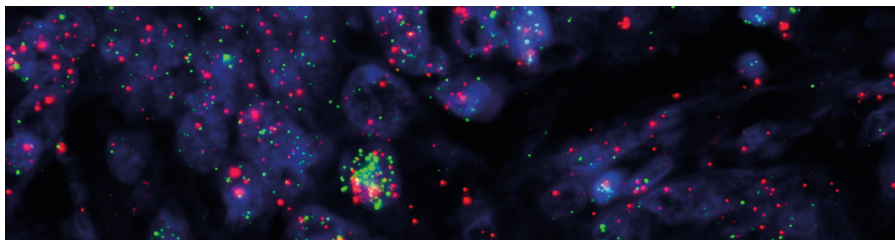
- Our **state-of-the-art *in vitro* and *ex vivo* model systems**, including complex co-cultures, facilitate the identification and validation of drug and biomarker candidates and the exploration of mechanisms of action.
- We have hands-on experience with a broad range of **>100 preclinical oncology models in mice and rats** that allow for in-depth characterization of novel drug candidates.
- We offer **comprehensive panels for immunophenotyping and cytokine profiling**. We use state-of-the-art spectral flow cytometry with off-the-shelf immune panels for human, mouse and rat.
- Ready-to-use **immunohistochemistry and immunofluorescence assays** for characterization of tumor infiltrating lymphocytes, including **spatial profiling** approaches.

IN VITRO IMMUNO-
ONCOLOGY ASSAYS



IN VIVO IMMUNO-
ONCOLOGY PLATFORM





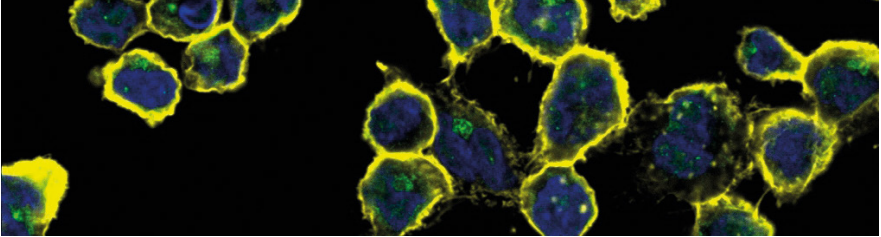
From Target Idea to Drug Candidate



***In Vitro* Immuno-Oncology Assays**

NUVISAN provides customized cell-based screening assays for novel immunotherapeutics, characterization of mechanism of action, as well as identification of novel drug targets. Our experts advise on the best path for developing your compound from bench to bedside. Services include:

- Access to fresh human blood panel
- Immune cell mediated tumor killing assays
 - Natural killer (NK) cell tumor killing assays
 - Cytotoxic T cell mediated tumor killing assays (2D and 3D)
 - Antibody-dependent cytotoxicity assays with macrophages, NK or T cells
- Differentiation and stimulation assays (e.g Tregs, Th17, Dendritic cells, B cell class switch, macrophages)
- Migration, chemotaxis and phagocytosis assays
- Tumor cell line assays
 - CRISPR-based screening, Transcriptomics
 - Target expression analysis



Comprehensive Immunological Profiling



***In Vivo* Immuno-Oncology Platform**

NUVISAN offers a well characterized portfolio of cell line-derived syngeneic IO models. We offer our models with the option of comprehensive evaluation of major immune cell subsets and correlate them with tumor progression. We use spectral flow cytometry and single cell sequencing, as well as spatial profiling of tumor-infiltrating lymphocytes to illuminate mechanisms of cancer-immune evasion. Services include:

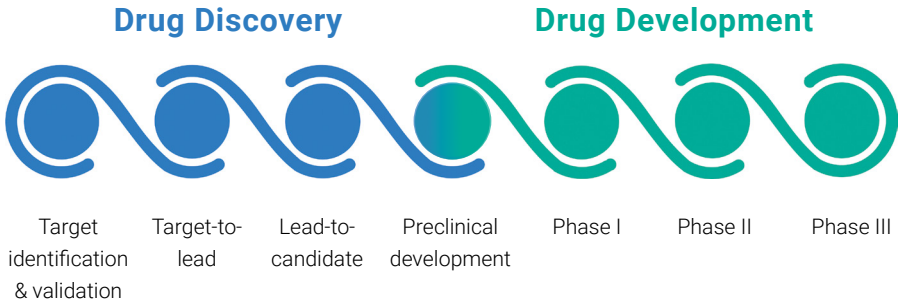
- Anti-tumor efficacy studies (including tolerability and exposure studies)
- Pharmacokinetic (PK) and pharmacodynamic (PD) assessments
- *In vivo* imaging (bioluminescence, μ CT)
- Humanized mouse models
- Cytokine- and immuno-profiling employing spectral flow cytometry (>25 parameters)
- Single cell RNA sequencing
- Spatial profiling of tumor-infiltrating lymphocytes
 - Single and multi-color fluorescent and chromogenic staining
 - In situ hybridization (RNAscope®)

The Science CRO - From Target to Patient

The NUVISAN group is a contract research and development and manufacturing organization (CRO/CDMO) with six sites in Germany and France as well as local experts situated in Latin America.

We offer unique, high-quality, and tailored integrated solutions along the drug discovery and development value chain to our biotech startup, pharma, non-profit, and venture capital clients – from target identification to the patient.

Thanks to more than 40 years of experience and about 1,000 employees (incl. > 70 % industry experienced scientists and lab professionals), we know how to discover, develop, and bring the next generation medicines to market. At the same time, our scientists understand that every project is different. With a flexible and innovative approach and transparent communication, our teams are passionate about closely collaborating with you to adapt to your individual needs.



Contact us



Dr. Carlo Stresemann
Director of Therapeutic Oncology
Research
carlo.stresemann@nuvisan.com



Dr. Christoph Sachse
VP Business Development
christoph.sachse@nuvisan.com

NUVISAN ICB GmbH
Muellerstr. 178
13353 Berlin, Germany

Web: www.nuvisan.com
Email: hello@nuvisan.com
LinkedIn: [company/nuvisan](https://www.linkedin.com/company/nuvisan)